



# State Transportation Board Meeting

January 16, 2025



- Invocation
- Pledge of Allegiance
- Roll Call
- Welcome Remarks
- Approval of Minutes



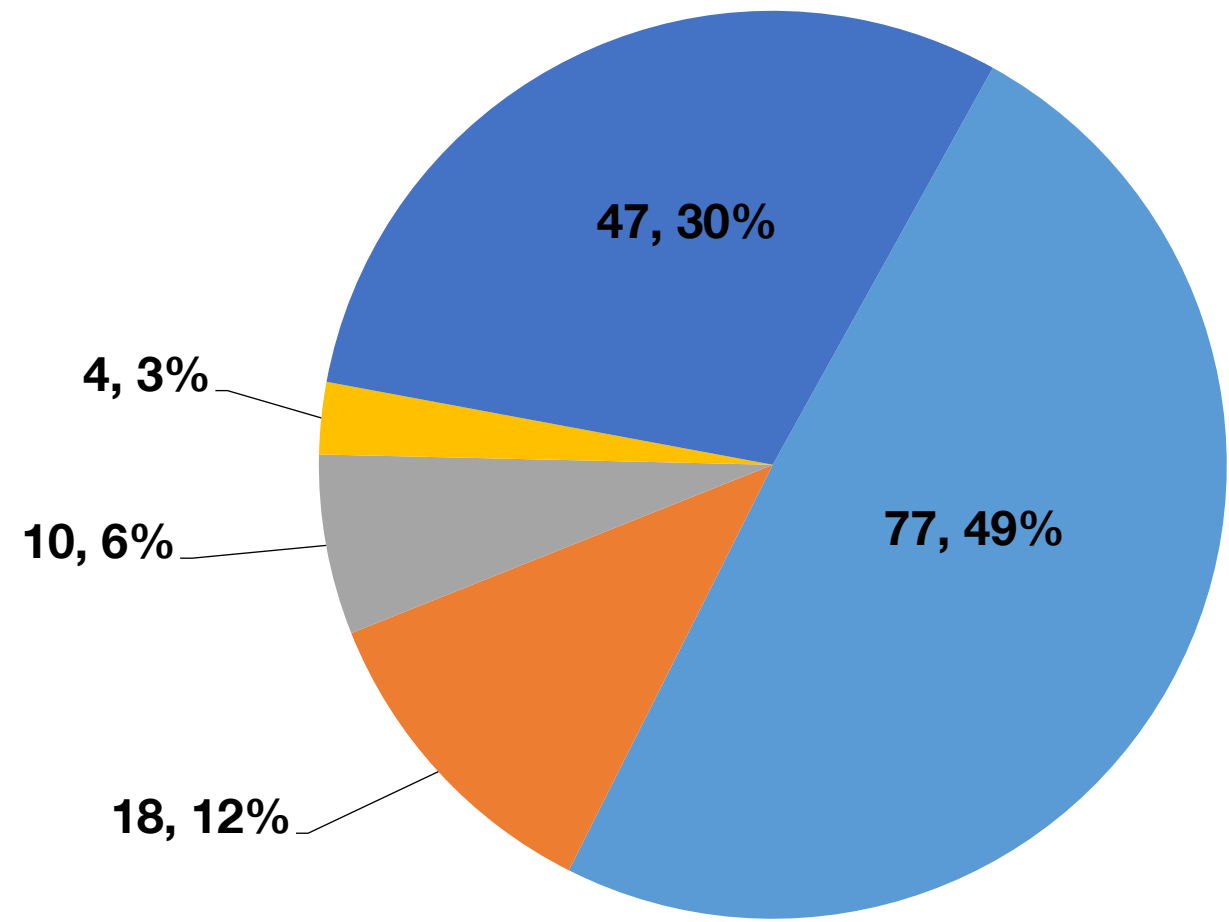


# February 2025 Letting Report

**Albert V. Shelby, III**  
**Director of Program Delivery**  
**January 16, 2025**



# Fiscal Year 2025 Letting Report Number of Projects Let in FY 2025 (Contractor Low Bid Award Data)



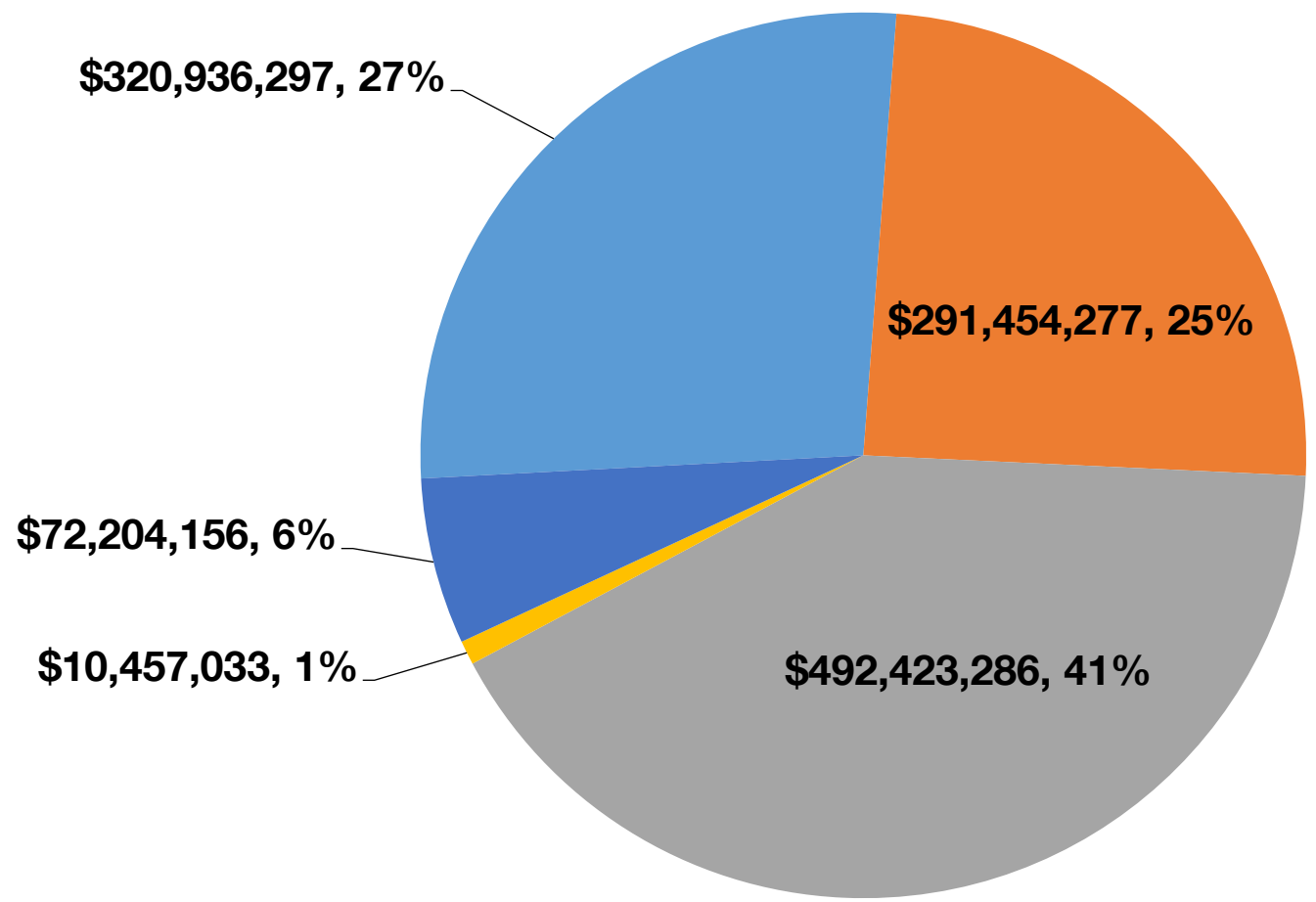
**Total = 156**

## GDOT & Local Lets

- Maintenance
- Bridges
- Roads
- Enhancements
- Safety

As of January 6, 2025  
Source Bidding Administration

## Fiscal Year 2025 Letting Report Dollar Amount of Projects Let in FY 2025 (Contractor Low Bid Award Data)



### GDOT & Local Lets

- Maintenance
- Bridges
- Roads
- Enhancement
- Safety

**Total = \$1,187,475,049**

*As of January 6, 2025  
Source Bidding Administration*

# December 2024 Letting Results

Summary	Presented to GDOT Board (Includes Adjustments)	Low Bid (Awarded to Contractor)	Low Bid w/Adjustments (Total Project Obligation)
GDOT Let (Project Count)	27	27	27
GDOT Let (Dollars)	\$175,473,101	\$177,814,282	\$188,789,438
Local Let (Project Count)	1	NA	NA
Local Let (Dollars)	\$3,817,272	NA	NA

\*Low Bid Award Amount includes the Deferred and Awarded projects.  
Does not include Engineering and Inspection, Utilities, Liquid AC, Incentives, LMIG and Rejected projects.

As of January 6, 2025  
Source Bidding Administration



# **GDOT and Local Let Projects**

## **February 2025 Letting**

# GDOT and Local Let Projects February 2025 Letting

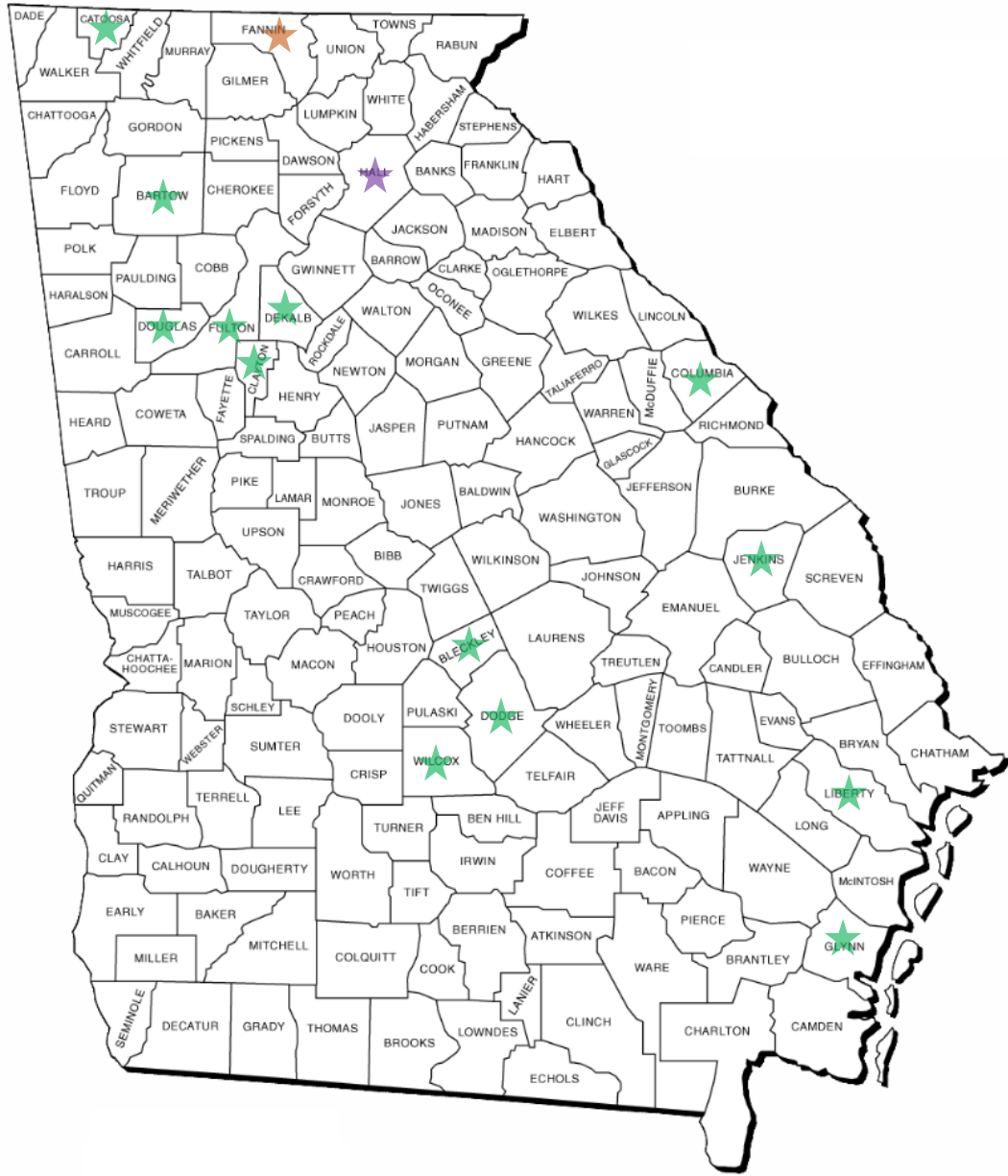
Project ID	Description	Primary County	Primary Work Type	Congressional District	Project Let By	Project Sponsor
M006550	SR 196 FROM SR 38 TO SR 25	Liberty	Resurface & Maintenance	001	DOT	GDOT
M006568	I-95 FROM LITTLE SATILLA RIVER TO SR 27	Glynn	Resurface & Maintenance	001	DOT	GDOT
M006554	SR 5 FROM CENTRAL CHURCH ROAD TO SR 8	Douglas	Resurface & Maintenance	003, 006	DOT	GDOT
M006563	I-20 FROM W OF HILL ST/FULTON TO W OF COLUMBIA DR/DEKALB	DeKalb	Concrete Rehab	004, 005	DOT	GDOT
M006571	I-285 FROM SNAPPINGER ROAD TO SR 8	DeKalb	Concrete Rehab	004, 005	DOT	GDOT
M006428	SR 85 FROM ROBERTS DRIVE TO N OF 85TH CIRCLE	Clayton	Resurface & Maintenance	005	DOT	GDOT
M006650	I-85 FROM S OF SR 139/CLAYTON TO SR 3/FULTON	Fulton	Concrete Preservation	005	DOT	GDOT
0018494	CR 356/AIRPORT ROAD FROM SR 46 TO LAURENS COUNTY LINE - TIA	Dodge	Shoulder Work	008	DOT	Dodge County
M006404	SR 87 FROM S OF SR 257 TO HOLLY ROSS ROAD	Bleckley	Resurface & Maintenance	008	DOT	GDOT
M006525	SR 215 FROM 5TH AVE TO SR 30	Wilcox	Resurface & Maintenance	008	DOT	GDOT
0015702	SR 53 FROM CS 921/AHALUNA DRIVE TO CS 966/SHALLOWFORD ROAD	Hall	Operational Improvement	009	DOT	GDOT



# GDOT and Local Let Projects February 2025 Letting

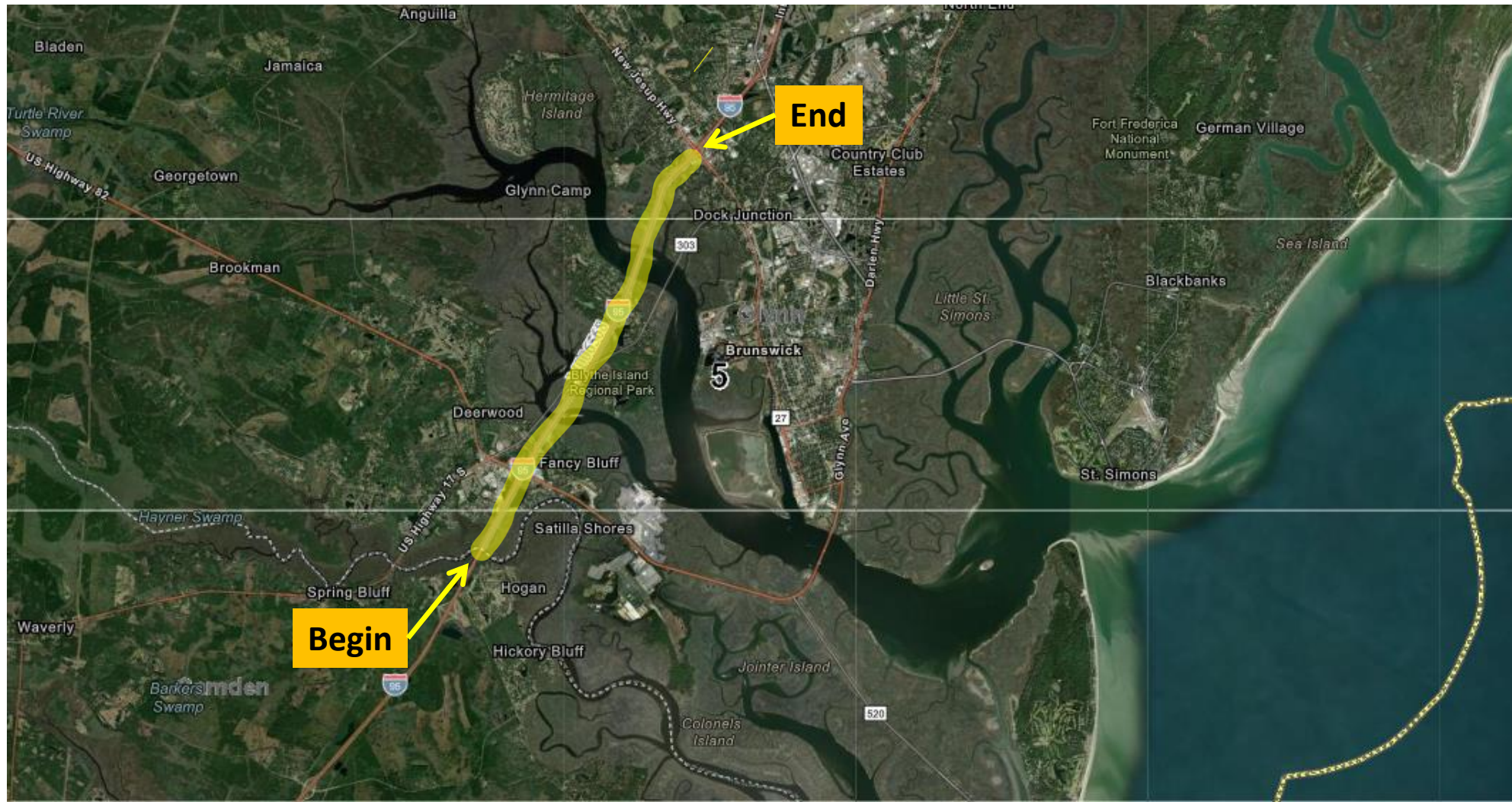
Project ID	Description	Primary County	Primary Work Type	Congressional District	Project Let By	Project Sponsor
0017040	SR 5 FROM N OF SR 2 TO S OF PINEVIEW LANE - PHASE III	Fannin	Widening	009	DOT	GDOT
0020053	GATEWOOD PARK ACCESS IMPROVEMENTS	Bartow	Resurface & Maintenance	011	LOC	Bartow County
M006406	SR 21 FROM SCREVEN COUNTY LINE TO SR 121	Jenkins	Resurface & Maintenance	012	DOT	GDOT
M006542	SR 232 FROM SR 104 TO SCOTT NIXON MEMORIAL DRIVE	Columbia	Resurface & Maintenance	012	DOT	GDOT
0019453	CS 550/THOMAS ROAD & CS 647/FANT DRIVE IN FORT OGLETHORPE	Catoosa	Resurface & Maintenance	014	LOC	Fort Oglethorpe

# February 2025 Projects Throughout Georgia

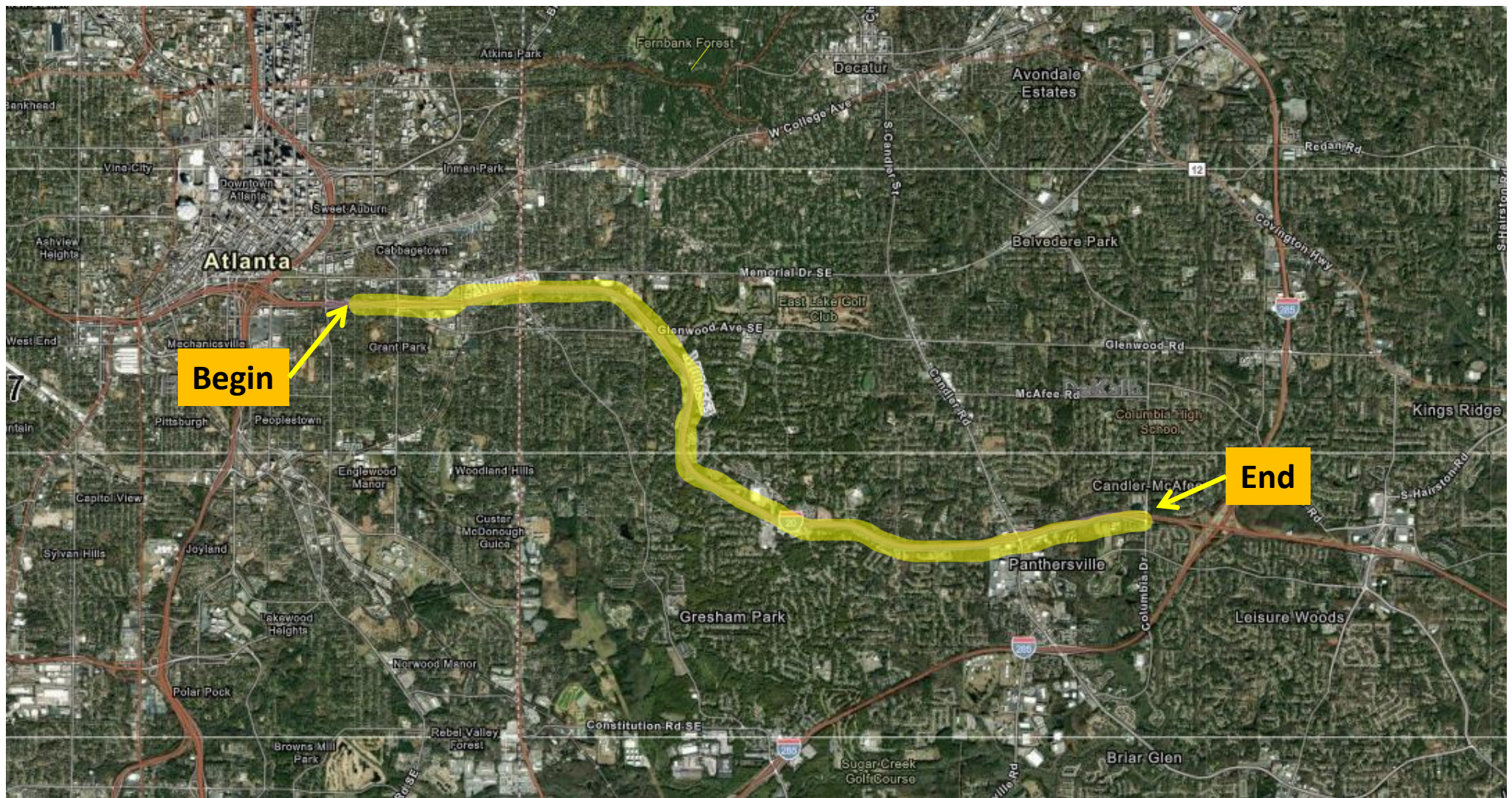


	<b>Maintenance</b>
	<b>Roads</b>
	<b>Safety</b>

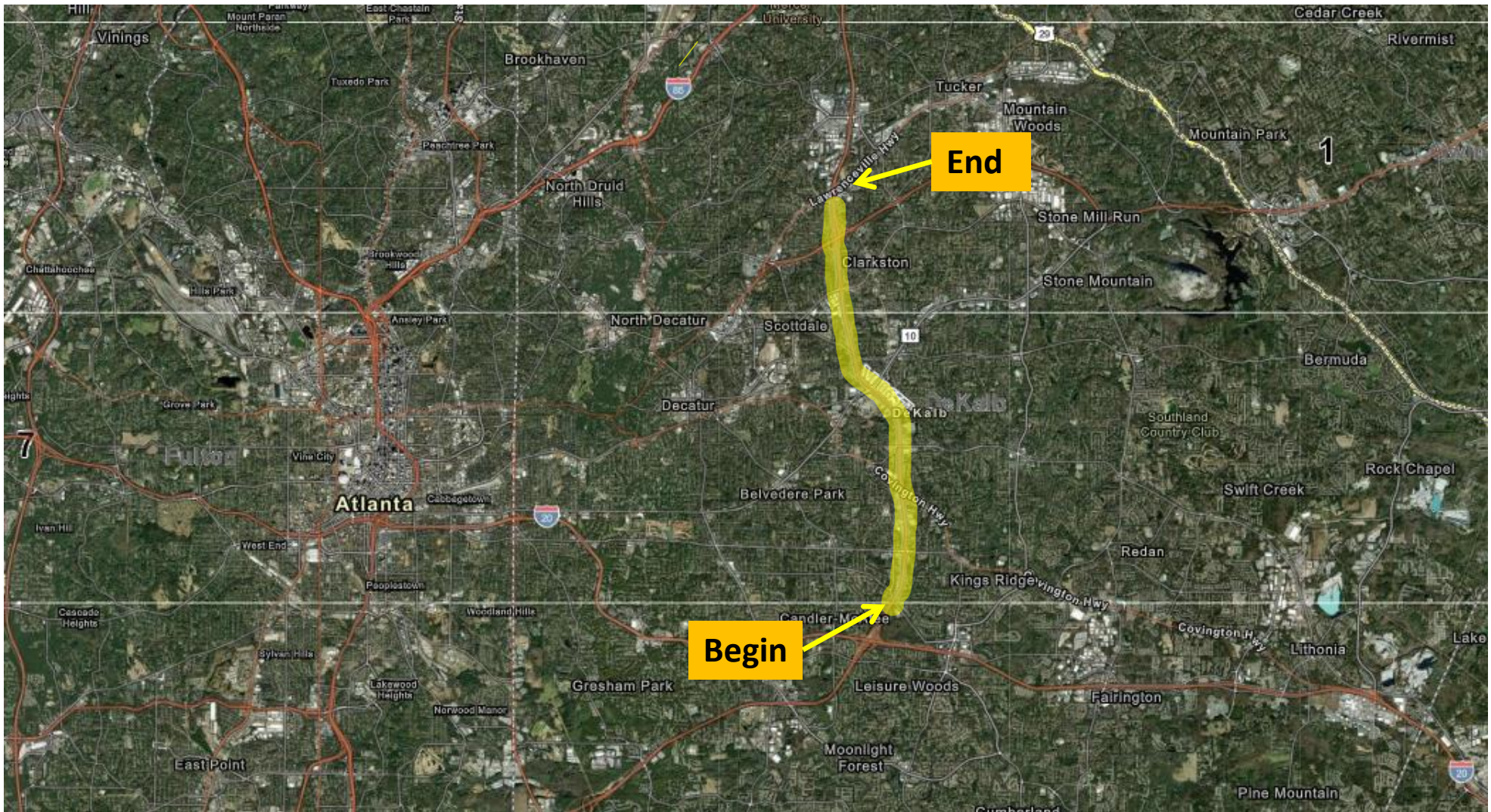
# I-95 FROM LITTLE SATILLA RIVER TO SR 27 Resurfacing Project in Glynn County Congressional District 1



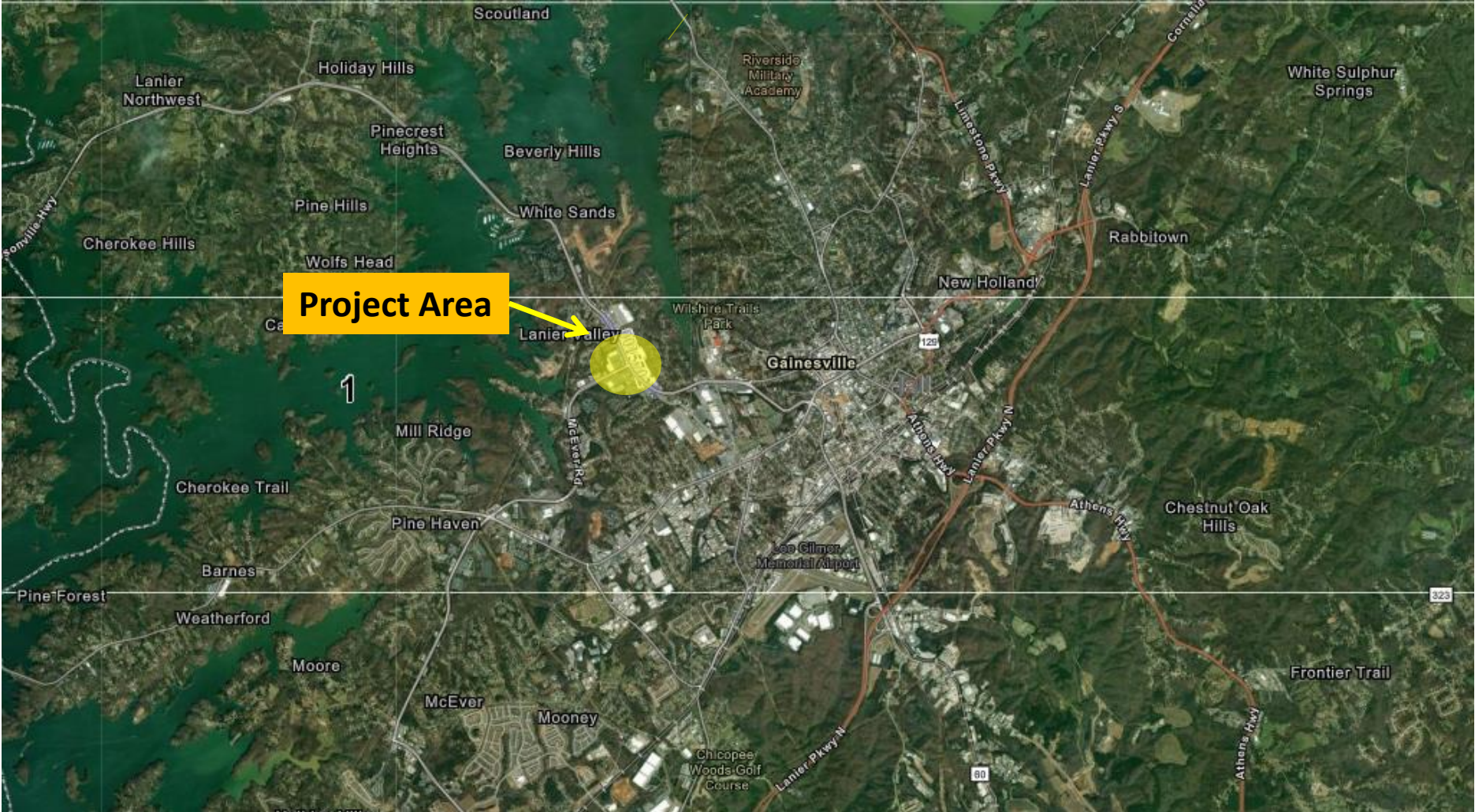
# I-20 FROM W OF HILL ST/FULTON TO W OF COLUMBIA DR/DEKALB Concrete Rehabilitation Project in DeKalb County Congressional District 4 & 5



# I-285 FROM SNAPPINGER ROAD TO SR 8 Concrete Rehabilitation Project in DeKalb County Congressional District 4 & 5



# SR 53 FROM CS 921/AHALUNA DRIVE TO CS 966/SHALLOWFORD ROAD Operational Improvement Project in Hall County Congressional District 9

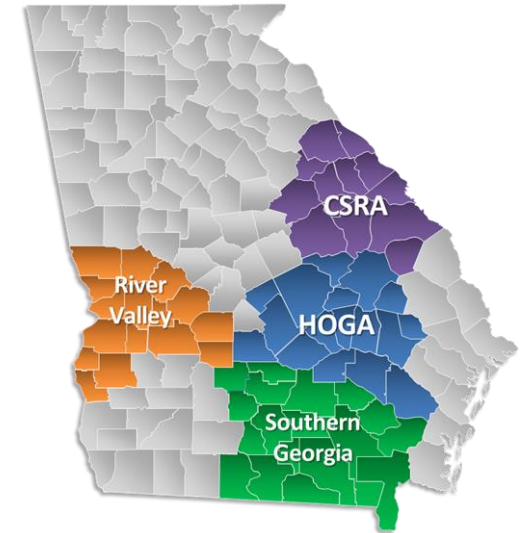


# SR 5 FROM N OF SR 2 TO S OF PINEVIEW LANE - PHASE III Widening Project in Fannin County Congressional District 9





# February 2025 Letting Proposed TIA Projects



**Kenneth Franks**  
**State TIA Administrator**  
**January 16, 2025**



# TIA Projects February 2025 Letting

Project ID	Description	Primary County	Primary Work Type	Congressional District	Project Let By	TIA Region
0018494	CR 356/AIRPORT ROAD FROM SR 46 TO LAURENS COUNTY LINE - TIA	Dodge	Shoulder Work	008	DOT	Heart of Georgia - Altamaha

# Airport Road from SR 46 to Laurens County Line Dodge County / Congressional District 8





**Additional Project to be  
Advertised in February 2025  
with a Future Let Date**

## GDOT Project Advertised only (not let) in February 2025

Project ID	Description	Primary County	Primary Work Type	Congressional District	Project Let By	Project Sponsor	Future Let Date
0013995	SR 42 @ NS #718418R 5 MI S OF MCDONOUGH	Henry	Bridges	010	DB	GDOT	Q4 CY 2025

# SR 42 Bridge Over Norfolk Southern Railroad (P.I. No. 0013995)

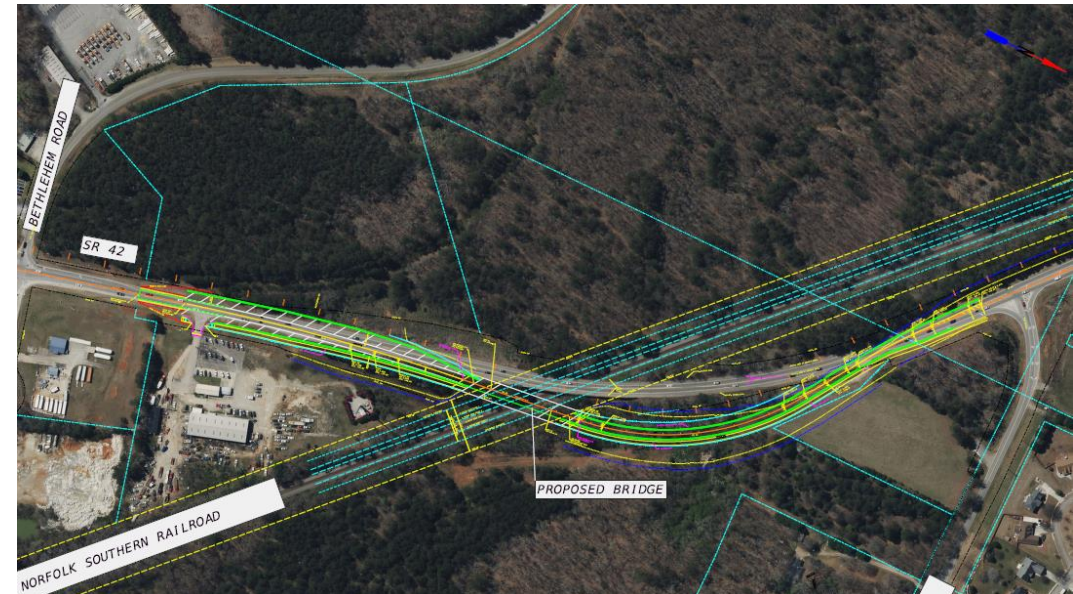
## Project Overview

The purpose of the SR 42 Bridge Over Norfolk Southern Railroad design-build project is to replace the existing bridge on SR 42 due to the age, vulnerability, and structural deficiency of the bridge. This project will ensure adequate traffic operations and functionality along SR 42 and will accommodate future track expansion by Norfolk Southern Railroad.

## Project Schedule

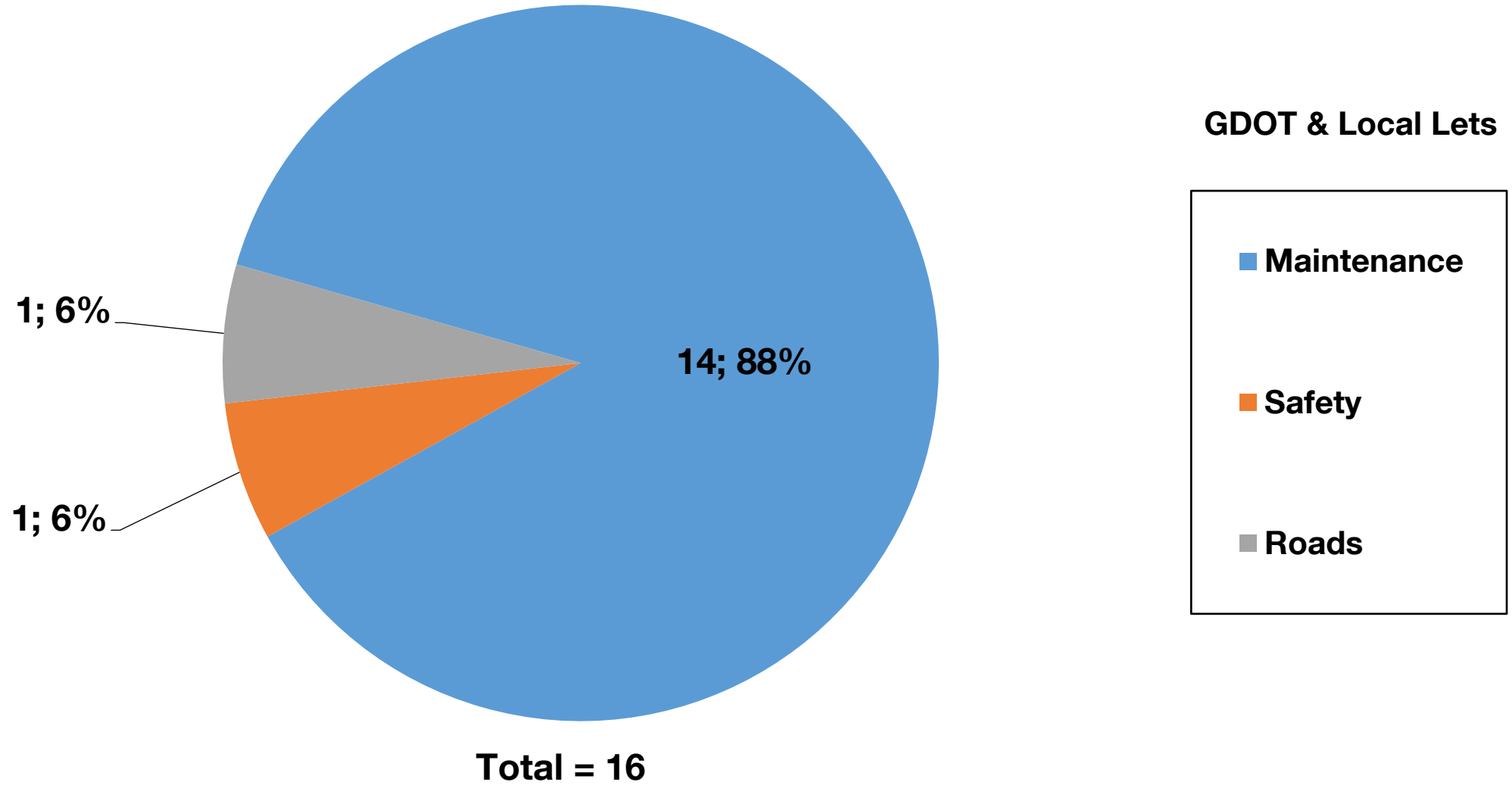


**Letting**  
Q4 CY 2025



# Fiscal Year 2025 Letting Report

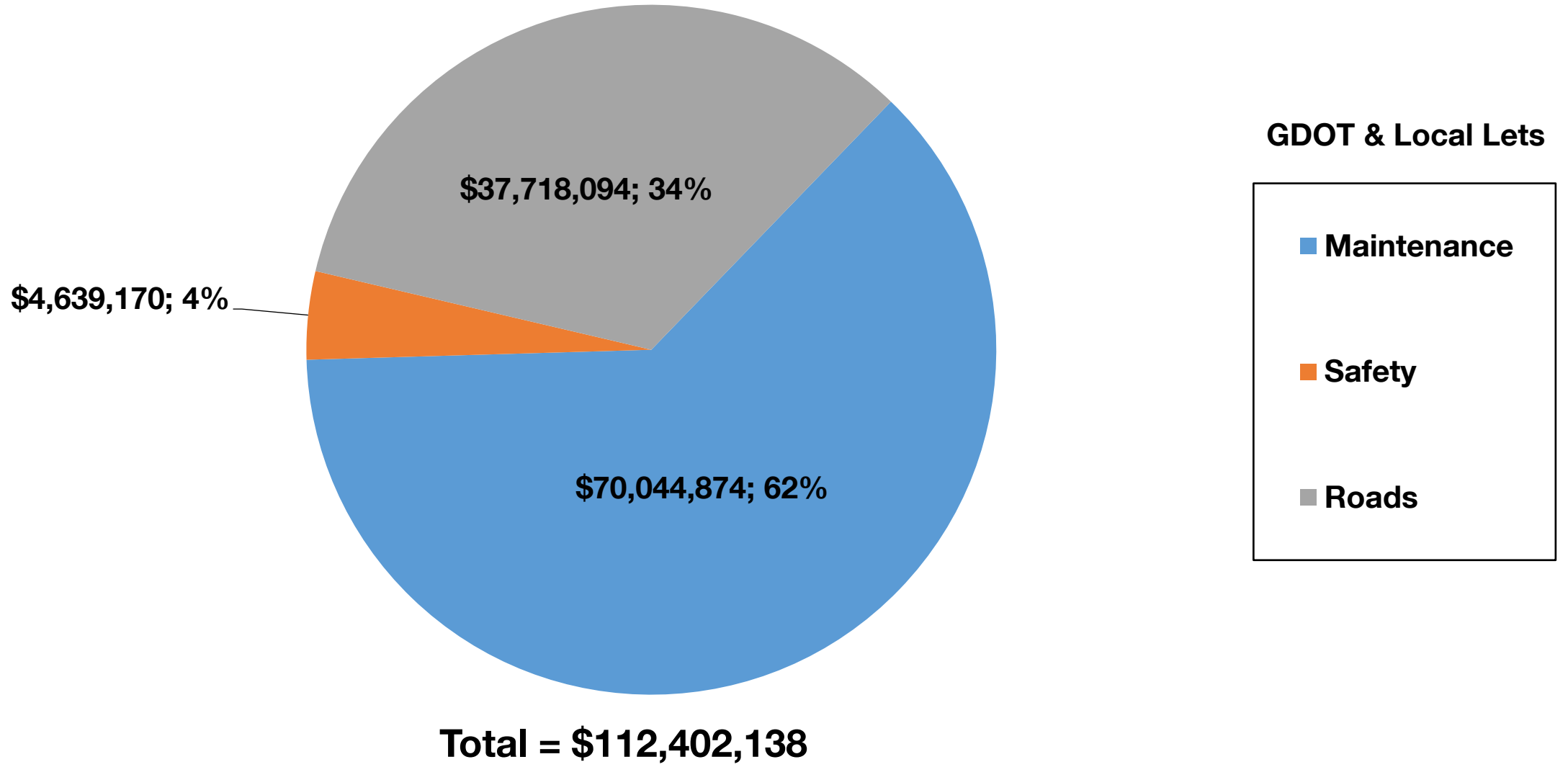
## Number of Projects February 2025 Letting



# Fiscal Year 2025 Letting Report

## Dollar Amount of Projects

### February 2025 Letting





# **For Board Review & Action**

## **Proposed Revisions to the Construction Work Program**

**Matt Markham**

**Deputy Director of Planning**

**January 16, 2025**



# February 2025 CWP Board Revision For Board Review

Project ID	Description	County	Congressional District	Primary Work Type	Action
0020763	SR 11/SR 49 @ SR 247	Bibb	002	Bridges	Addition to the Program
0020951	I-85 FROM RIVERDALE ROAD TO I-75	Fulton	005	Lighting	Addition to the Program
0020952	I-75 @ SR 154 - TUNNEL LIGHTING	Fulton	005	Lighting	Addition to the Program
0020953	I-75 @ RALPH MCGILL BLVD & @ BAKER STREET - TUNNEL LIGHTING	Fulton	005	Lighting	Addition to the Program
0020954	I-75 FROM I-20 TO I-85	Fulton	005	Lighting	Addition to the Program
0020955	I-75 FROM I-85 TO MEMORIAL DRIVE	Fulton	005	Lighting	Addition to the Program
0020765	I-16 EB & WB @ PENDLETON CREEK	Treutlen	012	Bridges	Addition to the Program

# January 2025 CWP Board Revision For Board Action

<b>Project ID</b>	<b>Description</b>	<b>County</b>	<b>Congressional District</b>	<b>Primary Work Type</b>	<b>Action</b>
0019943	CCC CAMP ROAD @ DILL CREEK 7 MI SE OF CRANDALL	Murray	014	Bridges	Deletion from the Program



# Commissioner's Report to the State Transportation Board

**Russell R. McMurry, P.E.**  
**Commissioner**  
**January 16, 2025**

# Commissioner's Update: December 2024 Data

- Transportation Fund Collections
- Employment Data
- Professional Services Procurement Update
- Highlights of Projects Open to Traffic



# Resurfacing – M006411

on SR 32 from the Terrell County Line to west of SR 3 in Lee County



# Construction of a bridge - 0015651

## on Watson Road over Reedy Creek Branch Tributary in Crisp County



# Construction of a bridge - 0015651

on Watson Road over Reedy Creek Branch Tributary in Crisp County

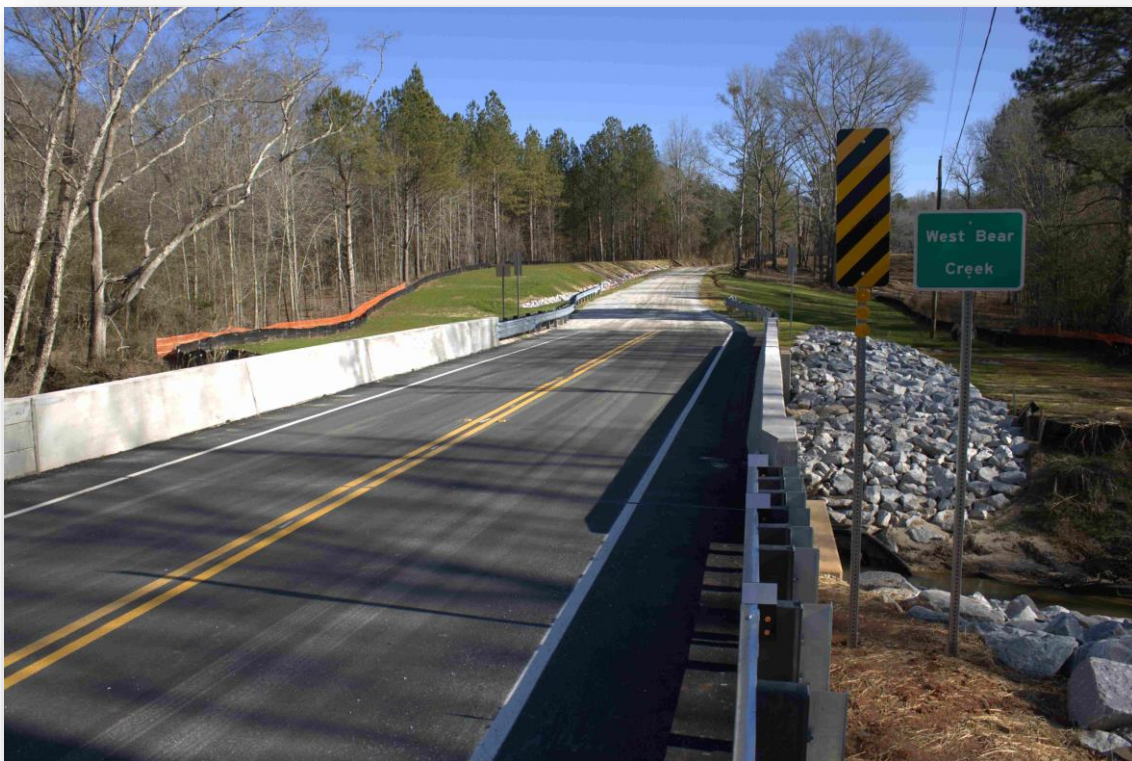




# Construction of a bridge - 0018055 on Benton Road over West Bear Creek in Newton County



# Construction of a bridge - 0018055 on Benton Road over West Bear Creek in Newton County



# Widening & Reconstruction – 222170 on US 1/SR 4 from CR 138 to SR 540 in Jefferson County



# Widening & Reconstruction – 222170

on US 1/SR 4 from CR 138 to SR 540 in Jefferson County



# Aviation Project at Falcon Field, Fayette County





# Honors, Updates, Achievements & Recognitions

# Dalton/Whitfield Tour



# Calvin Smyre Interchange Dedication





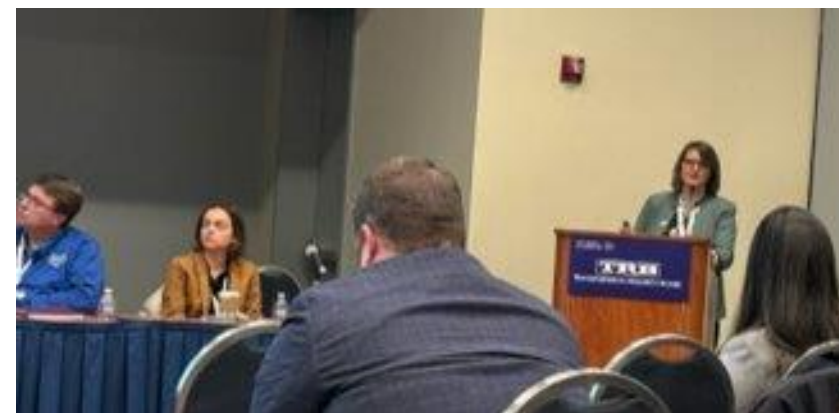
# John Hibbard named GAITE Transportation Professional of the Year



Institute of Transportation Engineers  
Georgia Section



# Transportation Research Board Annual Meeting

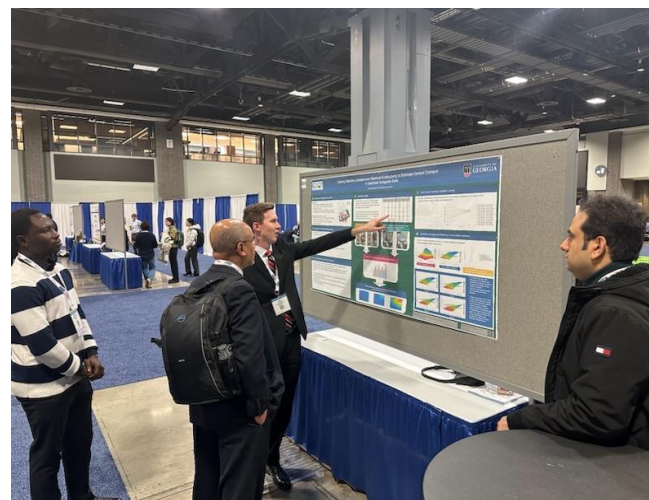


TRANSPORTATION RESEARCH BOARD

# Transportation Research Board Annual Meeting

## Presenters from GDOT included:

- Christina Barry
- Carla Benton-Hooks
- David Borchardt
- Eric Duff
- Habte Kassa
- Katina Lear
- Amber Phillips
- Clement Solomon
- Ariel Steele



# Georgia DOT Winter Storm Preparation & Response





### State of Georgia

Snowfall Totals January 10th - 11th

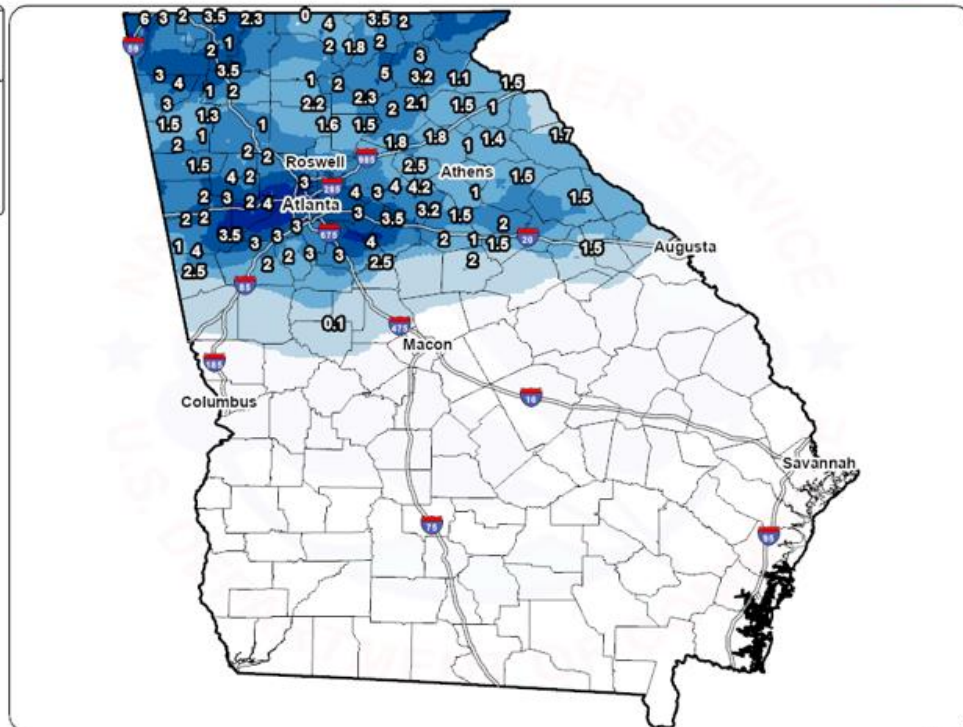
Analysis Data Source: NOHRSC and Regional Observations (Values Estimated at Locations)



Created: 01/14/2025 01:58PM

#### Snowfall (in)

- 0.0"
- < 1.0"
- 1.0" - 2.0"
- 2.0" - 3.0"
- 3.0" - 4.0"
- 4.0" - 6.0"
- 6.0" - 8.0"
- 8.0" - 12.0"
- 12.0" - 18.0"
- 18.0" - 24.0"
- 24.0" - 30.0"
- 30.0" - 36.0"
- 36.0" - 48.0"
- 48.0" - 60.0"
- 60.0" - 72.0"
- 72.0" - 96.0"
- 96.0" - 120.0"
- 120.0"+



This is an experimental product of the NWS GAZPACHO software package. Care should be taken in using the data. Unofficial observations may be plotted. Values at interpolated locations may not represent actual reports at that location.



### National Weather Service

Ice Accumulation January 10th - 11th

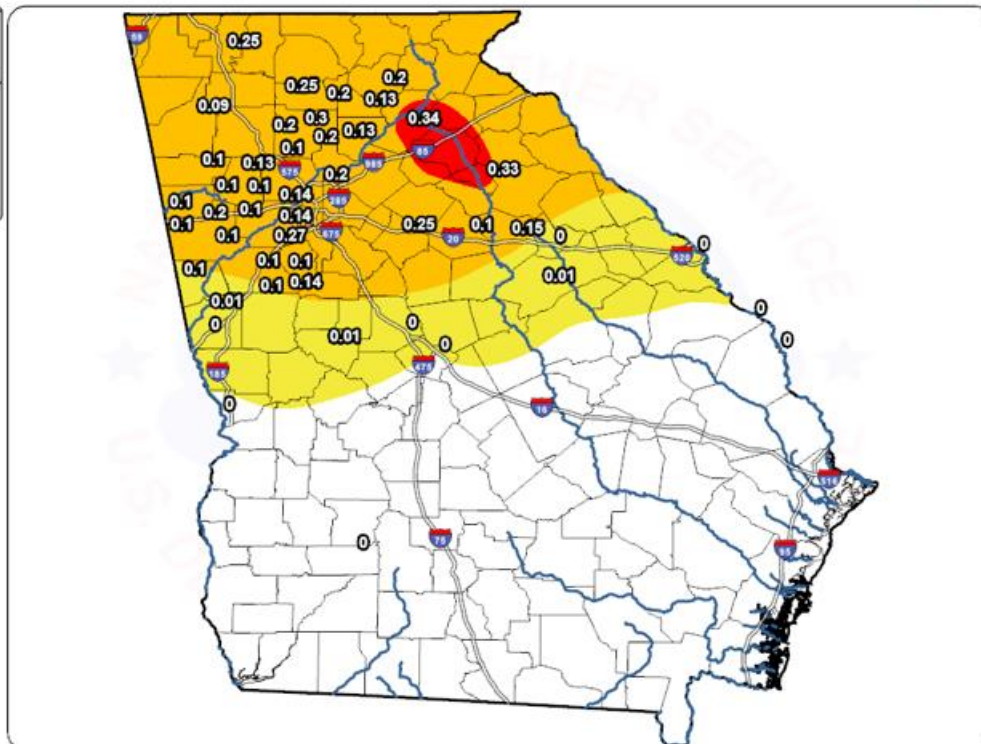
Analysis Data Source: Regional Observations



Created: 01/14/2025 01:47PM

#### Ice Accum (in)

- 0.00"
- 0.01" - 0.09"
- 0.10" - 0.24"
- 0.25" - 0.49"
- 0.50" - 0.74"
- 0.75" - 0.99"
- 1.00" - 2.00"
- 2.00" +



This is an experimental product of the NWS GAZPACHO software package. Care should be taken in using the data. Unofficial observations may be plotted. Values at interpolated locations may not represent actual reports at that location.



# Georgia DOT Winter Storm Preparation & Response



WINTER STORM

## GDOT preparing roads with brine ahead of possible snow in metro Atlanta, north Georgia

The effort is part of a coordinated response to avoid a repeat of the infamous 2014 snowstorm, which stranded thousands of drivers on Georgia's highways for hours.



## The Atlanta Journal-Constitution

### METRO ATLANTA Snowfall amounts in metro Atlanta higher than predicted; power outages growing

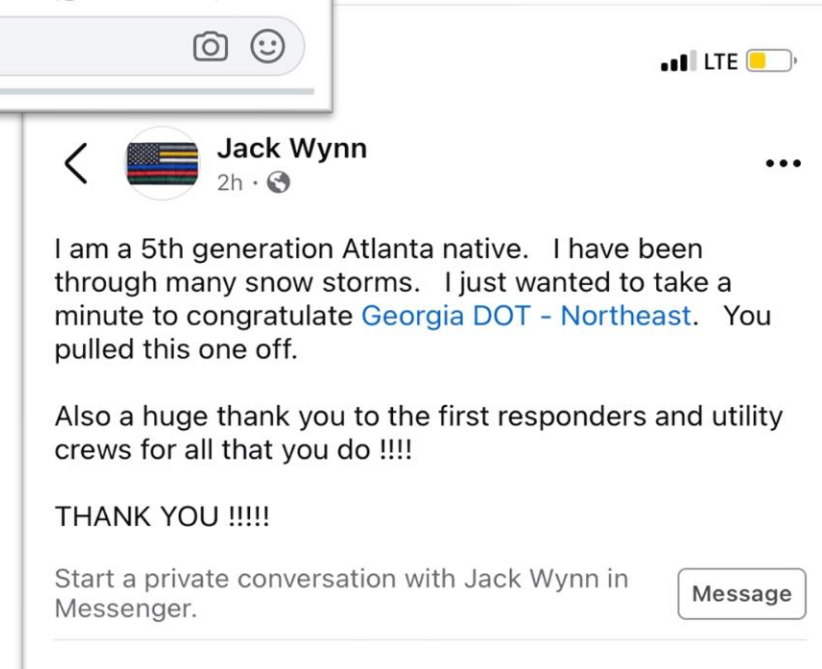
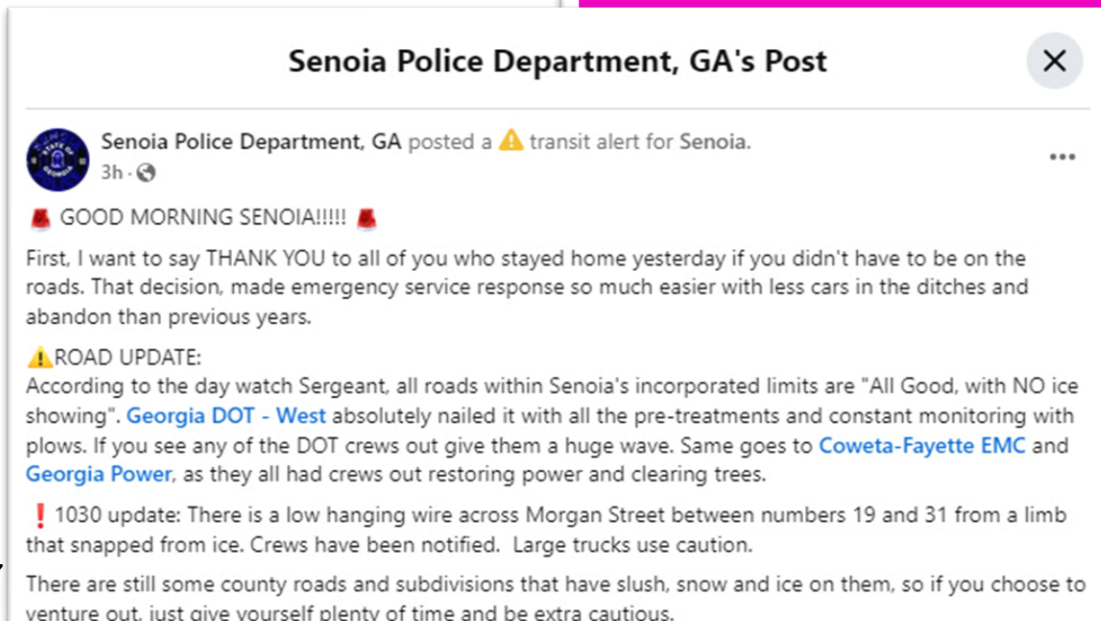


### GDOT beginning snow removal across region, stressing roads still hazardous



ATLANTA, Ga. (WDEF) — As snow, sleet, and freezing rain blanketed north and central Georgia on Friday, the Georgia Department of Transportation (GDOT) shifted from brine treatment to snow

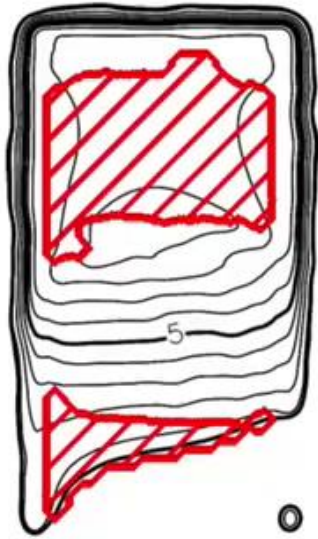
# Georgia DOT Winter Storm Preparation & Response



**Get us safe, boys! GDOT!!**



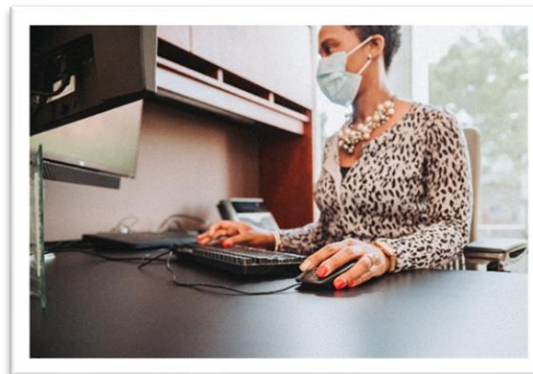




# President Jimmy Carter Funeral Services



# Annual Employee Recognition Awards



SAVE THE DATE

JOIN US FOR OUR  
ANNUAL  
**EMPLOYEE  
RECOGNITION**  
AWARDS

**WEDNESDAY, December 18, 2024**  
1:00pm to 2:30pm  
**One Georgia Center**  
600 West Peachtree Street  
Atlanta, GA 30308  
Room 401 - 404



# Annual Employee Recognition Awards



*The  
Sean Kornacki  
Award*

*Michael  
"Tony" Williford*

# Annual Employee Recognition Awards

*The  
Wayne  
Shackelford  
Leadership  
Award*



*Keenan Ford*

# Annual Employee Recognition Awards

**The  
James F.  
Condron  
Award**



**Amber Phillips**



# State Transportation Board Meeting

January 16, 2025